

# Tri-County Return to Learn

2020-2021

***A connecting web for lifelong learning.***



# On-site Learning

|        |   |
|--------|---|
| Pg. 3  | Student learning expectations               |
| Pg. 4  | Safety requirements                         |
| Pg. 5  | COVID-19 symptoms and procedures            |
| Pg. 6  | Technology                                  |
| Pg. 7  | Transportation                              |
| Pg. 8  | Arrival and dismissal                       |
| Pg. 9  | Visitors                                    |
| Pg. 10 | Breakfast and lunch                         |
| Pg. 11 | Social distancing in the classroom/hallways |
| Pg. 12 | Assemblies                                  |
| Pg. 13 | Sanitation of facilities                    |
| Pg. 14 | Signage                                     |

# ***Student learning expectations***



Students in PK-12th grade will return on-site to school for the upcoming 2020-2021 school year.

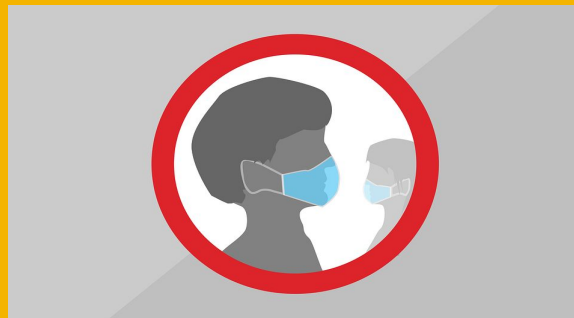
Modifications and safety precautions will be set in place to ensure safety for all students and staff.

Communication will be key in returning to learn.

All students shall be prepared to learn.

True Trojan PBIS expectations: Be safe, responsible, and respectful.

# Safety Requirements



## **FACIAL COVERINGS**

Face coverings will not be required for staff or students but are recommended.

They will be required on all buses and suburbans.

Tri-County will have one reusable face mask available for all students and staff.

Students and staff may wear facial coverings.

## **TEMPERATURES**

Parents need to take their child's temperature before students arrive at school.

Staff will be required to check their temperatures before arriving at school.

If you have a temperature of 100 please do not come to school.

# COVID-19

## Symptoms and Procedures

Students or staff shall immediately tell their teacher and the office if they are feeling ill.

Students or staff testing positive for COVID-19 shall self isolate for **ten days**.

Students or staff within six feet of the individual will be recommended to self isolate as well per the Department of Public Health recommendations and CDC guidance.

## Symptoms of Coronavirus (COVID-19)

Know the symptoms of COVID-19, which can include the following:



Symptoms can range from mild to severe illness, and appear 2-14 days after you are exposed to the virus that causes COVID-19.

**\*Seek medical care immediately if someone has emergency warning signs of COVID-19.**

- Trouble breathing
- Persistent pain or pressure in the chest
- New confusion
- Inability to wake or stay awake
- Bluish lips or face

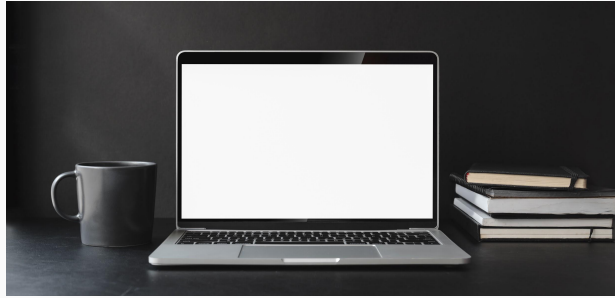
This list is not all possible symptoms. Please call your medical provider for any other symptoms that are severe or concerning to you.



[cdc.gov/coronavirus](https://cdc.gov/coronavirus)

© 2020 HHS. All rights reserved.

# *Technology*



Students in grades 2nd-12th grade will be issued a student chromebook.

Students in grades PK-1st will be issued a school iPad device.

All devices will be allowed to be taken home with students if the school district moves to an online learning platform.

All students shall sign the technology agreement on Powerschool.

Devices must be returned at the end of the school year.

# Transportation

Students shall have assigned seating and sit with siblings when applicable.

**Masks are required on the suburban and all buses.**

Each bus and specialized transportation vehicle will be sanitized before and after student arrival/dismissal.

Each student will use hand sanitizer upon arrival and dismissal from each school vehicle.

There will be **no** food or drinks allowed on the bus.





# Arrival and Dismissal Procedures

---

We are asking parents/guardians/visitors to not enter the school building when dropping and picking up their children. Please stay in your vehicles and we will buzz the students into the building. If you would like to call June at Ext. #140 to let us know when to expect you; we would appreciate this.

Visitors and volunteers will be limited at this time to reduce exposure to our students and staff.

Please understand this is to further ensure safety to all Tri-County students and faculty.



# Breakfast and Lunch



Students will eat meals in the cafeteria as normally scheduled with social distancing as much as possible.

Students should practice opening their own milk cartons and food items to limit additional touching of materials by staff.

This pertains to lower elementary students especially. If families could practice at home this would be greatly appreciated.

Meal times may be staggered if needed. Options to eat outside may be utilized if weather permits.

Additional sanitization will be completed for all cafeteria tables/benches and in the student lounge.

# Social distancing

Students shall be seated forward facing and all student couches, bean bag chairs, etc..will be removed from the classroom.

Classroom surfaces and manipulatives will be sanitized often.

Individual school supplies shall be kept in lockers and not shared amongst peers.

*Locker sharing* is not recommended. This includes gym lockers.

Social distancing measures shall be used as much as possible.

Restroom usage shall be one to two students in the restroom.

Dismissal times will be staggered to prevent exposure in the hallway.



*Face coverings are recommended but not required.*

# Assemblies

Limit assemblies when possible and/or have assemblies in small group settings

Social distancing within the bleachers

Utilize outdoor spaces when applicable

## Student lounge area

- Limitations on the number of students per booth to two
- Limitations on the number of students at tables to three
- Social distancing at the counter seating



# Sanitation of facilities



- Cleaning and disinfecting will be done daily and weekly in the building
- Priority will be given to frequently touched areas: doorknobs, surfaces, tables, desks, chairs, playground equipment, transportation vehicles, etc.
- Additional cleaning supplies will be in the building: hand sanitizing stations, disinfectant wipes, etc..

## Department of Public Health Recommendations

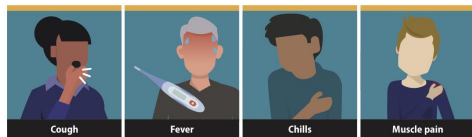
- Frequent hand-washing
- Student's Individual items keep in isolation in lockers/cubbies
- Drinking fountains suspended until further notice

# School Signage

- Signage will be placed in the Tri-County School buildings and in recreational facilities
- Examples listed below

## Symptoms of Coronavirus (COVID-19)

Know the symptoms of COVID-19, which can include the following:



Symptoms can range from mild to severe illness, and appear 2-14 days after you are exposed to the virus that causes COVID-19.

**\*Seek medical care immediately if someone has emergency warning signs of COVID-19.**

- Trouble breathing
- Inability to wake or stay awake
- Persistent pain or pressure in the chest
- Bluish lips or face
- New confusion

This list is not all possible symptoms. Please call your medical provider for any other symptoms that are severe or concerning to you.



[cdc.gov/coronavirus](https://cdc.gov/coronavirus)

3/17/20 10:00 AM

## Stop the spread of germs that can make you and others sick!



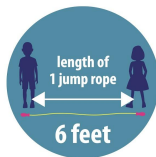
Wash your hands often



Wear a cloth face cover



Cover your coughs and sneezes



Keep **6 feet** of space between you and your friends



[cdc.gov/coronavirus](https://cdc.gov/coronavirus)

## Wear a Cloth Face Covering to Protect You and Your Friends

### PUT ON



WASH YOUR HANDS



PLACE OVER NOSE AND MOUTH

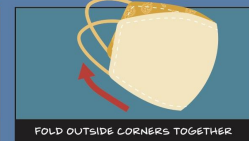


MAKE SURE YOU CAN BREATHE EASILY

### TAKE OFF



TAKE OFF YOUR FACE COVERING



FOLD OUTSIDE CORNERS TOGETHER



PUT ASIDE FOR WASHING



WASH YOUR HANDS

**WASH YOUR HANDS OFTEN, WEAR A MASK, AND STAY 6 FEET FROM OTHERS.**



[cdc.gov/coronavirus](https://cdc.gov/coronavirus)

# Hybrid Model

Pg. 15 Options for families

Pg. 16 Guidance from the Department of Education and the Department of Public Health

Pg. 17 Procedures



# Hybrid Learning



For families uncomfortable sending their child(ren) back to school due to COVID-19, an online learning component will be available for students in PK-12. Parents must still register their children even if choosing online instruction.

Devices will be provided to all students in grades PK-12. Students may take home their school-issued device.

Hot spots will be provided in the Tri-County Community School District to provide internet services for all students.

# Hybrid Learning Option **50% online/50% on-site**

Per Governor Reynolds proclamation; all Iowa Schools must educate students in grades PK-12th with on-site learning for 50% of the time if students choose to attend school rather than the online option. All curricula shall be included.

TC plans to return full time and will only move to a 50% option if necessary.

The designated platform for all Tri-County students will be Google Classroom for remote learning options. Zoom technologies will be utilized and videos will be uploaded to a classroom page to provide convenient viewing throughout the school day.



# Procedures for online learning

Attendance will be taken at the start of the day and each period thereafter when a student logs onto Google classroom.

If students are not actively participating remotely then they will be marked *truant*.

Students may view videos via live stream or on the teachers' YouTube channel or Google classroom.



Google Classroom

# Continuous online learning

Pg. 19      Guidance

Pg. 20      Continuous online learning guidance



# Online Learning

Tri-County would only move to online learning for everyone due to a situation where Governor Reynolds makes that a state wide decision with support from the Department of Health.

## Attendance

Required for all students in grades PK-12

## Devices

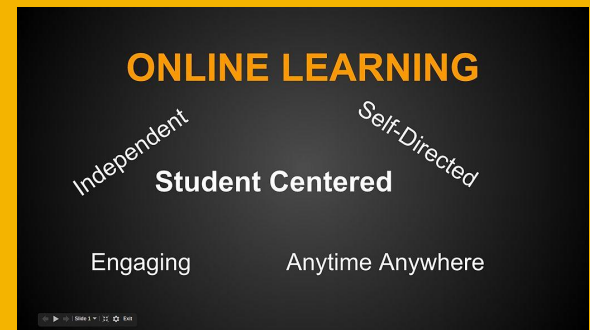
All students will be issued a device

Lower elementary students (PK-1st) would be issued an iPad or iPod

2nd-12th graders will be issued a Chromebook



# Continuous online learning



- Staff will take attendance daily, grades and credit will be issued to all students
- Students are expected to actively participate using the Google classroom platform, be present for zoom sessions, and complete coursework remotely
- Staff will upload all learning activities to their classroom page daily
- Daily office hours will be utilized for staff during normal contract hours
- This model will be utilized if a closure is mandated from the Department of Education, the Department of Public Health, and Governor Reynolds

All school issued devices may go home with Tri-County students.

# Questions?

Please contact the following administrators:

Superintendent Mr. Chad Straight at [chad.straight@tri-countyschools.com](mailto:chad.straight@tri-countyschools.com)

Principal Ms. Jennifer Berg at [jennifer.berg@tri-countyschools.com](mailto:jennifer.berg@tri-countyschools.com)

Athletic Director Mr. Scott Edmundson at  
[scott.edmundson@tri-countyschools.com](mailto:scott.edmundson@tri-countyschools.com)

Go Trojans! #tcpride